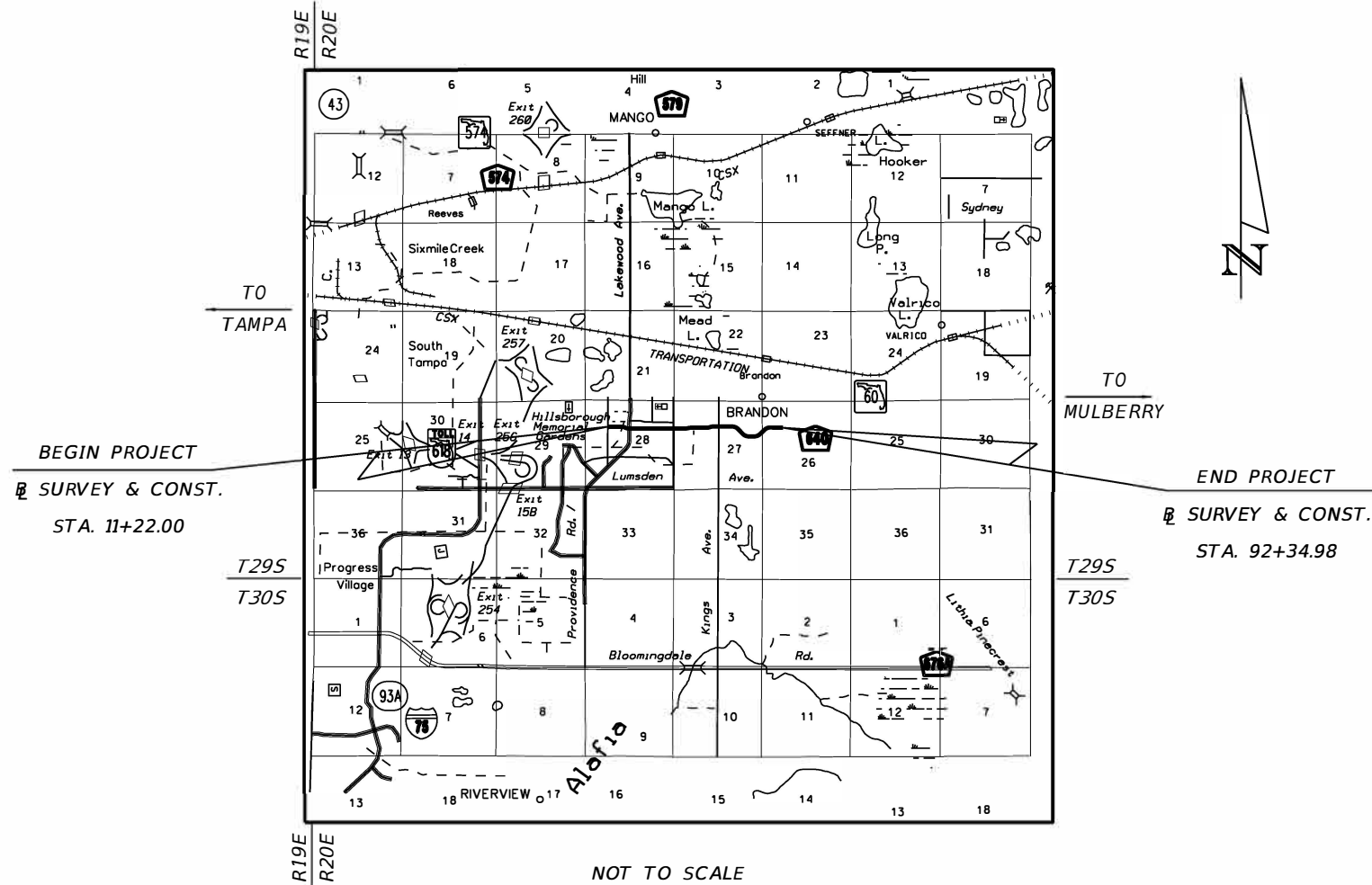


HILLSBOROUGH COUNTY FLORIDA

TYPICAL SECTION PACKAGE

COUNTY CAPITAL IMPROVEMENT

PROGRAM NUMBER XXX-XXX



LOCATION MAP

SECTIONS 27 & 28, TOWNSHIP 29S, RANGE 20E

APPROVED BY:

THIS ITEM HAS BEEN DIGITALLY
SIGNED AND SEALED BY:

ON THE DATE ADJACENT TO THE SEAL

PRINTED COPIES OF THIS DOCUMENT ARE
NOT CONSIDERED SIGNED AND SEALED
AND THE SIGNATURE MUST BE VERIFIED
ON ANY ELECTRONIC COPIES.

NAME OF THE PROFESSIONAL ENGINEER
NAME OF THE ENGINEERING FIRM
ADDRESS OF THE ENGINEERING FIRM

THE ABOVE NAMED PROFESSIONAL ENGINEER SHALL BE RESPONSIBLE FOR THE
FOLLOWING SHEETS IN ACCORDANCE WITH RULE 61G15-23.004, F.A.C.

TYPICAL SECTION PACKAGE

SHEET NO	SHEET DESCRIPTION
1	COVER SHEET
2	TYPICAL SECTION NO. 1
3	TYPICAL SECTION NO. 2
4	TYPICAL SECTION NO. 3

TYPICAL SECTION APPROVAL:

TECHNICAL SERVICES DIVISION DIRECTOR
OR DESIGNEE

COUNTY ENGINEER

PROJECT CONTROLS

HILLSBOROUGH COUNTY CONTEXT CLASSIFICATION¹

- () C1&C2 : RURAL
- () C3R : SUBURBAN RESIDENTIAL
- () C3C : SUBURBAN COMMERCIAL
- () C3T : SUBURBAN TOWN
- () C4 : URBAN GENERAL
- () LOCAL ROAD

FUNCTIONAL CLASSIFICATION

- () ARTERIAL
- () COLLECTOR
- () RESIDENTIAL LOCAL ROAD
- () COMMERCIAL LOCAL ROAD

ACCESS CLASSIFICATION²

- () CLASS 2 - RESTRICTIVE
- () CLASS 3 - RESTRICTIVE
- () CLASS 4 - NON-RESTRICTIVE
- () CLASS 5 - RESTRICTIVE
- () CLASS 6 - NON-RESTRICTIVE
- () CLASS 7 - BOTH MEDIAN TYPES

CRITERIA

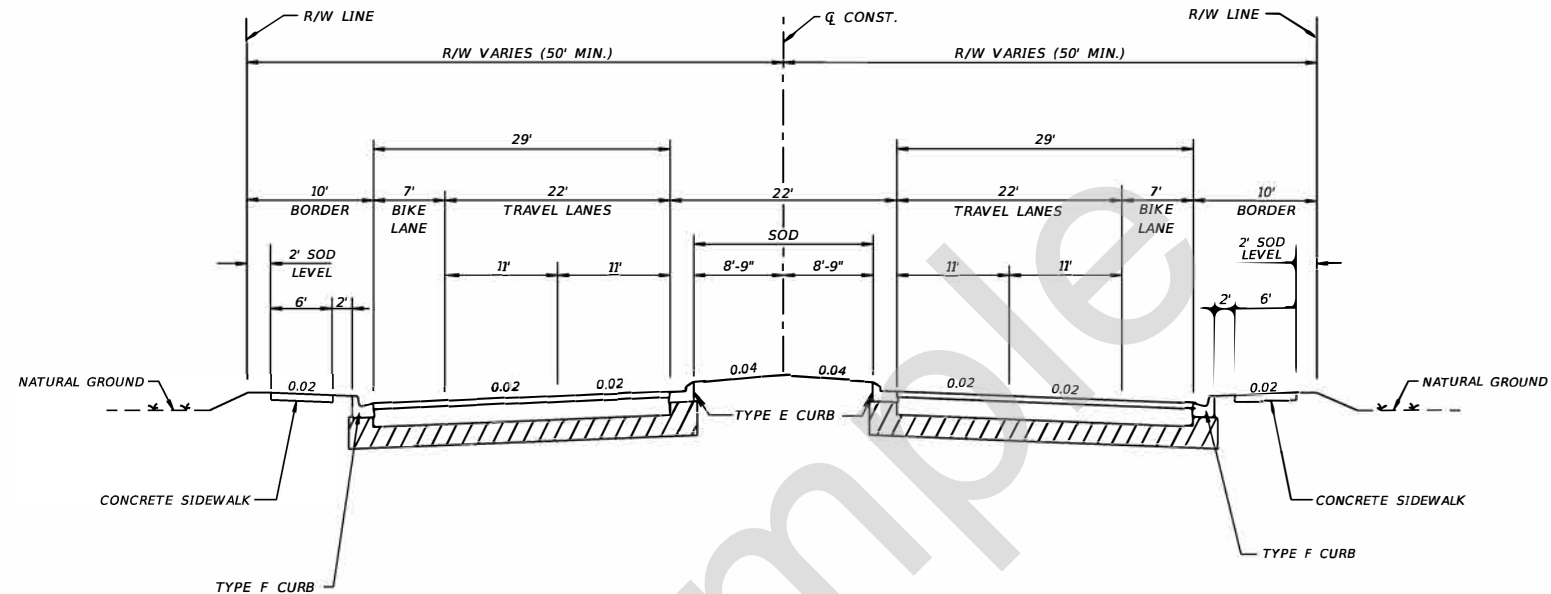
- () NEW CONSTRUCTION / RECONSTRUCTION (ARTERIALS & COLLECTORS)
- () RESURFACING (ARTERIALS & COLLECTORS)
- () RESURFACING (LOCAL ROADS)

POTENTIAL DESIGN EXCEPTIONS AND DEVIATIONS RELATED TO TYPICAL SECTION:

NOTES:

- ¹ CONTEXT CLASSIFICATION BASED ON FUTURE LAND USE.
- ² FOR ACCESS CLASSIFICATION REFERENCE:
THE HILLSBOROUGH COUNTY LAND DEVELOPMENT CODE
PART 6.04.00 - ACCESS MANAGEMENT, SECTION 6.04.07.

TYPICAL SECTION No. 1



TYPICAL SECTION SHOWN IS AN EXAMPLE ONLY, REPLACE WITH ACTUAL PROJECT TYPICAL SECTION.

TRAFFIC DATA

CURRENT YEAR = 2022 AADT = 22800
 ESTIMATED OPENING YEAR = 2025 AADT = 25800
 ESTIMATED DESIGN YEAR = 2045 AADT = 30600
 K = 6% D = 55% T = 2% (24 HOUR)
 DESIGN HOUR T = 1%
 DESIGN SPEED = 45 MPH
 TARGET SPEED = 40 MPH

LAST REVISION	DESCRIPTION
09/23/22	

ORIGINAL SIGNED AND SEALED DOCUMENTS ARE RETAINED IN THE HILLSBOROUGH COUNTY ARCHIVE FILES



TYPICAL SECTION PACKAGE
TYPICAL SECTION No. 1

INDEX	SHEET
TSP-002	2 of 4

THE OFFICIAL RECORD OF THIS SHEET IS THE ELECTRONIC FILE DIGITALLY SIGNED AND SEALED UNDER RULE 61G15-23.004, F.A.C.

PROJECT CONTROLS

HILLSBOROUGH COUNTY CONTEXT CLASSIFICATION¹

- () C1&C2 : RURAL
- () C3R : SUBURBAN RESIDENTIAL
- () C3C : SUBURBAN COMMERCIAL
- () C3T : SUBURBAN TOWN
- () C4 : URBAN GENERAL
- () LOCAL ROAD

FUNCTIONAL CLASSIFICATION

- () ARTERIAL
- () RESIDENTIAL LOCAL ROAD
- () COLLECTOR
- () COMMERCIAL LOCAL ROAD

ACCESS CLASSIFICATION²

- () 2 - RESTRICTIVE
- () 3 - RESTRICTIVE
- () 4 - NON-RESTRICTIVE
- () 5 - RESTRICTIVE
- () 6 - NON-RESTRICTIVE
- () 7 - BOTH MEDIAN TYPES

CRITERIA

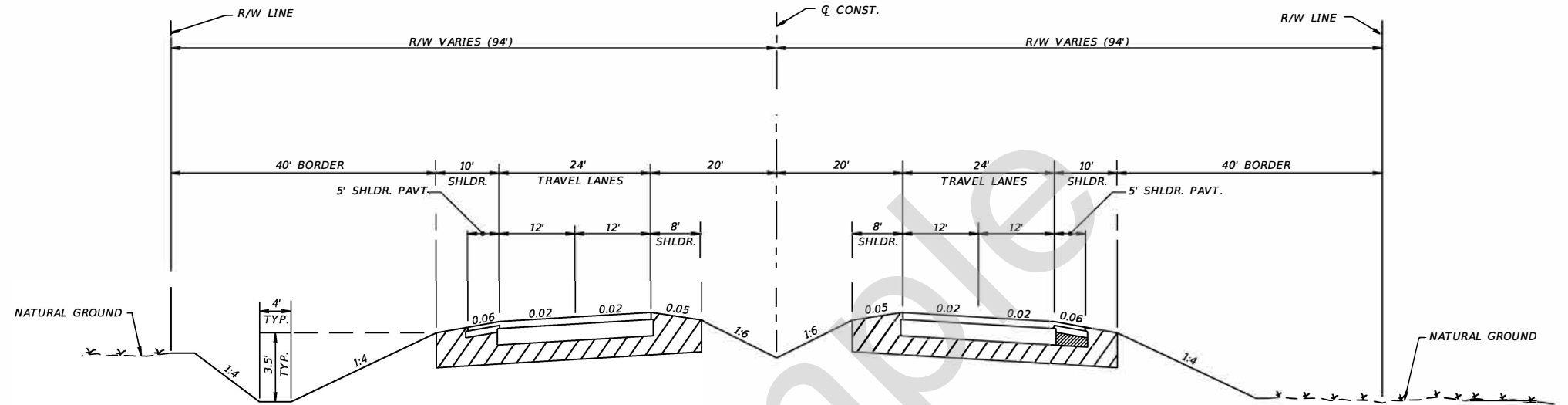
- () NEW CONSTRUCTION / RECONSTRUCTION (ARTERIALS & COLLECTORS)
- () RESURFACING (ARTERIALS & COLLECTORS)
- () RESURFACING (LOCAL ROADS)

POTENTIAL DESIGN EXCEPTIONS AND DEVIATIONS RELATED TO TYPICAL SECTION:

NOTES:

- ¹ CONTEXT CLASSIFICATION BASED ON FUTURE LAND USE.
- ² FOR ACCESS CLASSIFICATION REFERENCE:
THE HILLSBOROUGH COUNTY LAND DEVELOPMENT CODE
PART 6.04.00 - ACCESS MANAGEMENT, SECTION 6.04.07.

TYPICAL SECTION No. 2



TYPICAL SECTION SHOWN IS AN EXAMPLE ONLY, REPLACE WITH ACTUAL PROJECT TYPICAL SECTION.

TRAFFIC DATA

CURRENT YEAR = 2022 AADT = 22800
 ESTIMATED OPENING YEAR = 2025 AADT = 25800
 ESTIMATED DESIGN YEAR = 2045 AADT = 30600
 K = 6% D = 55% T = 2% (24 HOUR)
 DESIGN HOUR T = 1%
 DESIGN SPEED = 45 MPH
 TARGET SPEED = 40 MPH

LAST REVISION	DESCRIPTION
09/23/22	

ORIGINAL SIGNED AND SEALED DOCUMENTS ARE RETAINED IN THE HILLSBOROUGH COUNTY ARCHIVE FILES



TYPICAL SECTION PACKAGE
TYPICAL SECTION No. 2

INDEX	SHEET
TSP-003	3 of 4

THE OFFICIAL RECORD OF THIS SHEET IS THE ELECTRONIC FILE DIGITALLY SIGNED AND SEALED UNDER RULE 61G15-23.004, F.A.C.

PROJECT CONTROLS

HILLSBOROUGH COUNTY CONTEXT CLASSIFICATION¹

- C1&C2 : RURAL
- C3R : SUBURBAN RESIDENTIAL
- C3C : SUBURBAN COMMERCIAL
- C3T : SUBURBAN TOWN
- C4 : URBAN GENERAL
- LOCAL ROAD

FUNCTIONAL CLASSIFICATION

- ARTERIAL
- COLLECTOR
- RESIDENTIAL LOCAL ROAD
- COMMERCIAL LOCAL ROAD

ACCESS CLASSIFICATION²

- 2 - RESTRICTIVE
- 3 - RESTRICTIVE
- 4 - NON-RESTRICTIVE
- 5 - RESTRICTIVE
- 6 - NON-RESTRICTIVE
- 7 - BOTH MEDIAN TYPES

CRITERIA

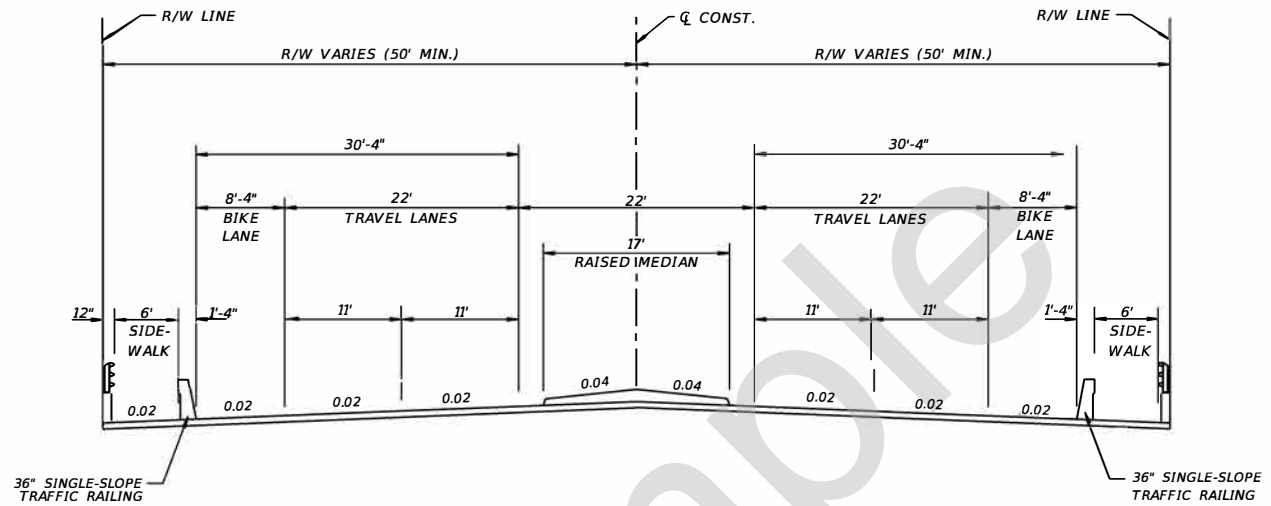
- NEW CONSTRUCTION / RECONSTRUCTION (ARTERIALS & COLLECTORS)
- RESURFACING (ARTERIALS & COLLECTORS)
- RESURFACING (LOCAL ROADS)

POTENTIAL DESIGN EXCEPTIONS AND DEVIATIONS RELATED TO TYPICAL SECTION:

NOTES:

- ¹ CONTEXT CLASSIFICATION BASED ON FUTURE LAND USE.
- ² FOR ACCESS CLASSIFICATION REFERENCE:
THE HILLSBOROUGH COUNTY LAND DEVELOPMENT CODE
PART 6.04.00 - ACCESS MANAGEMENT, SECTION 6.04.07.

TYPICAL SECTION No. 3



TYPICAL SECTION SHOWN IS AN EXAMPLE ONLY, REPLACE WITH ACTUAL PROJECT TYPICAL SECTION.

TRAFFIC DATA

CURRENT YEAR = 2022 AADT = 22800
 ESTIMATED OPENING YEAR = 2025 AADT = 25800
 ESTIMATED DESIGN YEAR = 2045 AADT = 30600
 K = 6% D = 55% T = 2% (24 HOUR)
 DESIGN HOUR T = 1%
 DESIGN SPEED = 45 MPH
 TARGET SPEED = 40 MPH

Example

THE OFFICIAL RECORD OF THIS SHEET IS THE ELECTRONIC FILE DIGITALLY SIGNED AND SEALED UNDER RULE 61G15-23.004, F.A.C.

LAST REVISION	DESCRIPTION
09/23/22	

ORIGINAL SIGNED AND SEALED DOCUMENTS ARE RETAINED IN THE HILLSBOROUGH COUNTY ARCHIVE FILES



TYPICAL SECTION PACKAGE
TYPICAL SECTION No. 3

INDEX	SHEET
TSP-004	4 of 4